
MD POWER MACHINES

GIPERCALC, GIPERNEST, GIPERPOST

SOFTWARE PACKAGE FOR THERMAL CUTTING
OF SHEET AND PROFILE METAL

GIPERCALC SOFTWARE



Calculator GiperCalc

- saving time and labor

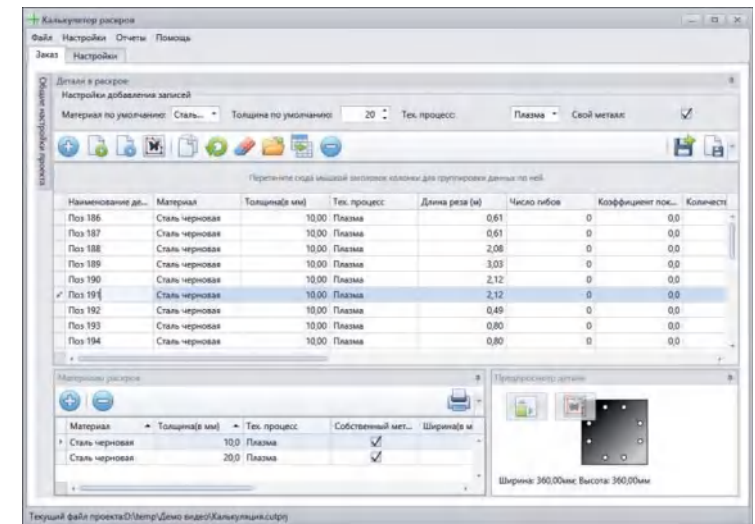
Accounting for the processes of cutting, drilling, marking, threading, bending and painting.

Built-in reports for the Client and the manager with comprehensive information on the cost of products and services.

Fast calculation helps to keep old and attract new customers.

Main functionality of GiperCalc:

- Loading of the part files in dxf format
- Flexible system of cost calculation settings
- Importing data from Excel files
- Generating a report for a manager
- Generating a report for a Client
- Uploading data for GiperNest program
- Importing data from GiperNest program
- Part templates library with the ability to change parameters



GIPERNEST SOFTWARE



GiperNest

- non-linear nesting

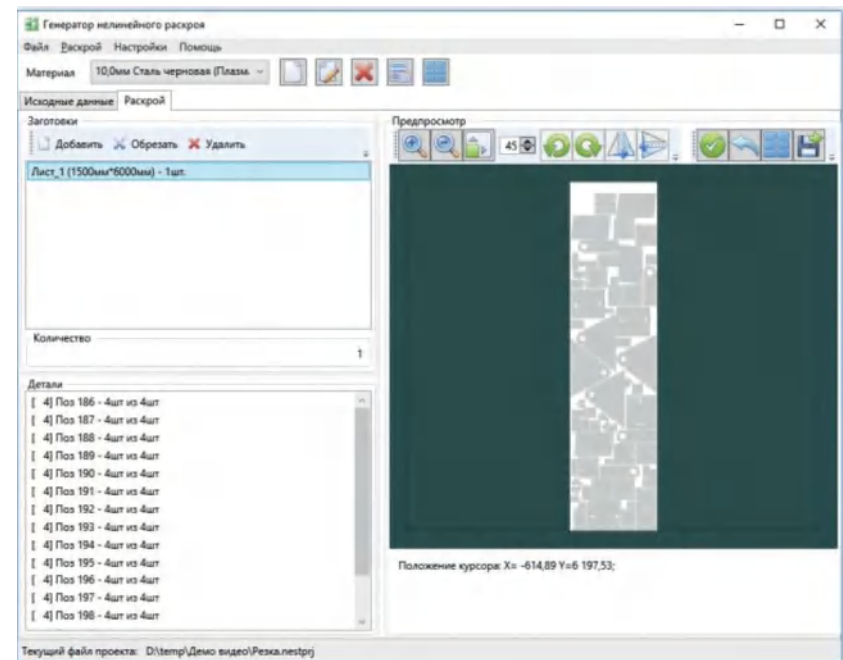
Automated accounting of the number of laid out parts and materials. Rational, fast and user-friendly arrangement of vector drawings on the blanks. The result is saved in the format *DXF (AUTOCAD 2000).

The files you receive can be used:

- 1) with GiperPost program, which generates high quality control programs.
- 2) in CAM programs already available in production for the control programs formation for CNC machines.

Main functionality of GiperNest:

- Group multi-material unloading of sheets * dxf
 - Printing a cutting chart for easy accounting of finished parts.
 - Manual nesting of parts
 - Exporting of the part vectors
 - Quantitative accounting of parts and blanks
 - Array nesting of parts
 - Part template library
- with the ability to change parameters
- Automatic nesting of parts



GIPERPOST SOFTWARE



Postprocessor GiperPost

Preparation of control programs for gas-plasma CNC machines

Ease of use. The postprocessor makes it easy to create part programs directly from the CNC shell (Windows XP and above). Carefully designed torch height control greatly improves cut quality. Enhanced performance. Using GiperPost with the GiperNest program at a number of enterprises has resulted in a tenfold increase in productivity and a proportional reduction in costs.

Profitability improved due to improved product quality, increased cutting speed and torch consumable life, and a significant reduction in CNC operator skill requirements.

The main functions of the postprocessor:

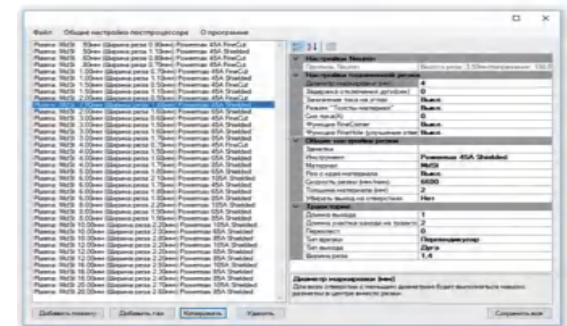
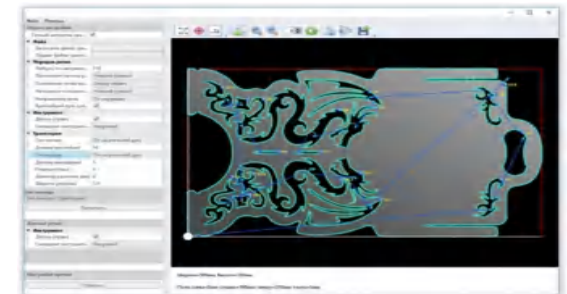
- Support for holes tables for plasma machines.
- Afterburning function for thick steels ensures complete cut through of parts.
- Edge cutting for a workpiece of thick steels.
- Corners handling: current reduction at corners to improve the quality of cutting sharp corners.
- Height control on and off based on the physical characteristics of machine mechanics.

You will forget about the "pecks" of the torch at the corners when cutting complex geometry and when cutting holes.

- Soft pierce for gas cutting avoids "spitting" of the torch when piercing thick steels.
- Preview greatly simplifies the definition of the contents of vector files and cutter programs, reduces the number of errors, and saves working time.
- Pipe cutting: processing of a profile pipe of various sections.
- Arc shut-down in advance of end of cutting.
- Hole cutting from center.



We are ready to provide a full list of functions and other information quickly upon request.



OUR PARTNERS



Our Partners & Suppliers



Accumech Specialized Industrial Machinery & Equipment Manufacturing

Accumech is leading CNC Machinery manufacturing in Dubai, with versatile, reliable and cost effective machines.



Narex Industry Tools & Equipment Trading Co LLC

